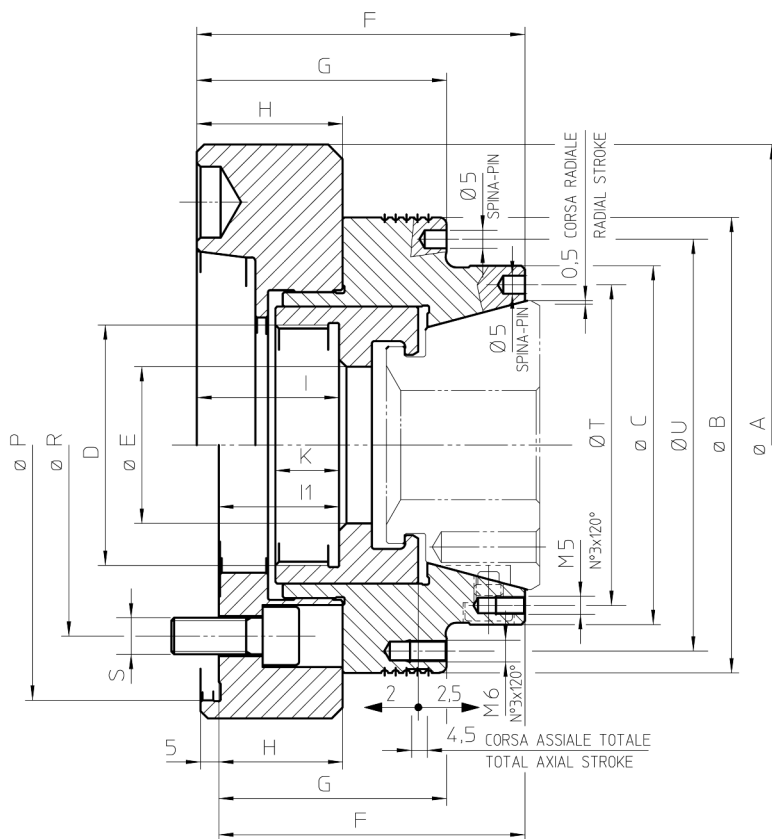


Mandrini porta-pinze a trazione per lavorazione in barra Pull-to-close collet chucks for bar machining

- Attuazione a trazione
Pull-to-close style
- Ricambio rapido della pinza
Quick collet change



IN DOTAZIONE: Mandrino e viti di fissaggio
(pinze da ordinare separatamente)
EQUIPMENT: Chuck and fixing screws
(collets to be ordered separately)



Soggetto a cambiamenti tecnici - Subject to technical changes

| Modello MPT - MPT model | KSZ-DZ 42 | | | KSZ-DZ 65 | | | | KSZ-DZ 80 | |
|--|-----------|---------------|---------------|---------------|---------------|---------------|---------------|---------------|---------------|
| Attacco naso macchina - Machine spindle | FL140 | A5 | A6 | FL170 | A5 | A6 | A8 | FL170 | |
| Attacco - Code | 77686942 | 77687142 | 77687242 | 77687065 | 77687165 | 77687265 | 77687365 | 77686980 | |
| A | 150 | 140 | 165 | 185 | 155 | 165 | 220 | 185 | |
| B | | 125 | | | | 145 | | 165 | |
| C | | 98.5 | | | | 120.5 | | 140 | |
| D | | M66x1.5 | | | | M78x1.5 | | M95x1.5 | |
| E | | 43 | | | | 67 | | 82 | |
| F | 84 | 90 | | 89 | | 95 | 98 | 135 | |
| G | 62.5 | 68.5 | | 62.5 | | 68.5 | 71.5 | 108.5 | |
| H | 34 | 40 | | 34 | | 40 | 43 | 75 | |
| Min-Max | | | 37-41.5 | | | 37-41.5 | | 40-44.5 | |
| Min-Max | | | | 31-35.5 | | | | 46-50.5 | |
| K | | 17.5 | | | | 17.5 | | 23 | |
| P _{H6} | 140 | | | 170 | | | | 170 | |
| R | 104.8 | 104.8 | 133.4 | 133.4 | 104.8 | 133.4 | 171.4 | 133.4 | |
| S | 3xM10 | 4xM10 | 4xM12 | 6xM12 | 4xM10 | 4xM12 | 4xM16 | 6xM12 | |
| T | | 88 | | | | 110 | | 128 | |
| U | | 113 | | | | 133.4 | | 154 | |
| Velocità massima - Max. speed | r.p.m. | 7000 | | | 6000 | | | | 5500 |
| Forza assiale max. - Max. axial force | kN | 35 | | | 45 | | | | 50 |
| Forza di serraggio max. - Max clamping force | kN | 80 | | | 105 | | | | 115 |
| Massa (senza pinza) - Mass (without collet) | Kg | 7.0 | 6.0 | 7.2 | 14.8 | 10.8 | 13.0 | 17.2 | 15 |
| Cilindri consigliati - Recomm. cylinders | Tipo | VNK-T2 102-46 | VNK-T2 102-46 | VNK-T2 102-46 | VNK-T2 150-67 | VNK-T2 150-67 | VNK-T2 150-67 | VNK-T2 150-67 | VNK-T2 200-86 |
| Vel. max del cilindro - Max. cylinder speed | r.p.m. | 7000 | 7000 | 7000 | 5500 | 5500 | 5500 | 5500 | 4500 |

| Attrezzo di ricambio - Changing unit | KSZ-DZ 42 | | | KSZ-DZ 65 | | | | KSZ-DZ 80 |
|--------------------------------------|-----------|--|--|-----------|--|--|--|-----------|
| Accessori - Accessories | | | | | | | | |
| Manuale - Manual | 00196842 | | | 00196844 | | | | 01863597 |
| Pneumatico - Pneumatic | 01866500 | | | 01866599 | | | | |

Attrezzo di ricambio manuale: vedi foto a pag. 51-52-53
Manual changing unit: see picture page 51-52-53