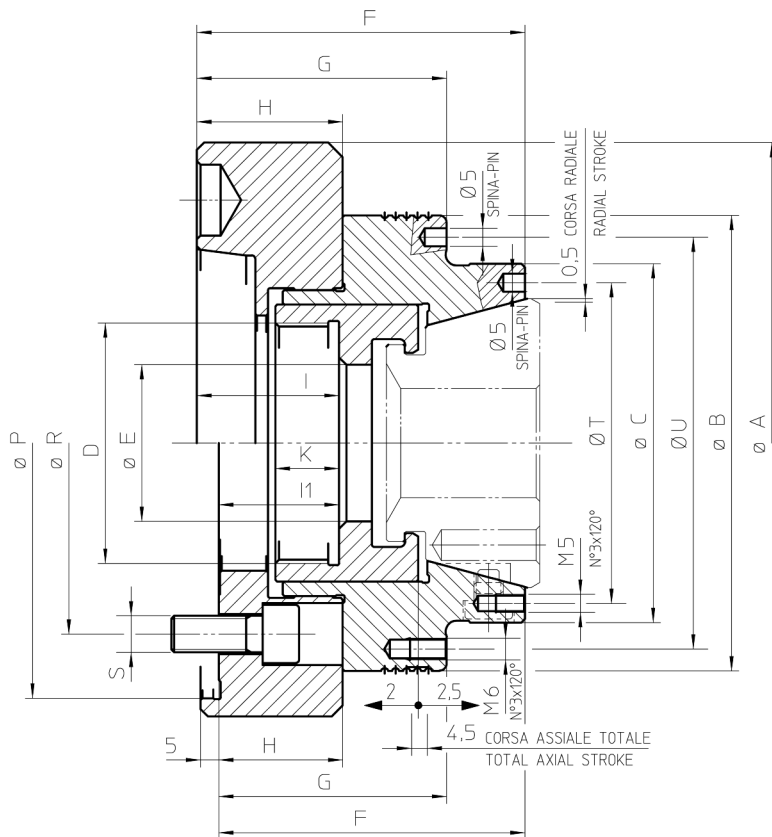
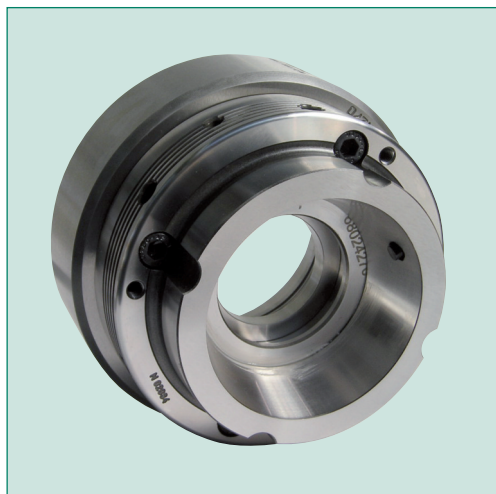


• Attuazione a trazione
Pull-to-close style

• Ricambio rapido della pinza
Quick collet change



IN DOTAZIONE: Mandrino e viti di fissaggio
(pinze da ordinare separatamente)

EQUIPMENT : Chuck and fixing screws
(collets to be ordered separately)

Soggetto a cambiamenti tecnici - Subject to technical changes

Modello MPT - MPT model		KSZ-DZ 42			KSZ-DZ 65				KSZ-DZ 80
Attacco naso macchina - Machine spindle		FL140	A5	A6	FL170	A5	A6	A8	FL170
Codice - Code		77686942	77687142	77687242	77687065	77687165	77687265	77687365	77686980
	A	150	140	165	185	155	165	220	185
	B		125				145		165
	C		98.5				120.5		140
	D		M66x1.5				M78x1.5		M95x1.5
	E		43				67		82
	F	84	90		89		95	98	135
	G	62.5	68.5		62.5		68.5	71.5	108.5
	H	34	40		34		40	43	75
Minimo-Max - Min-Max			37-41.5				37-41.5	40-44.5	
Minimo-Max - Min-Max		I	31-35.5		31-35.5				46-50.5
	K		17.5				17.5		23
	PH6	140			170				170
	R	104.8	104.8	133.4	133.4	104.8	133.4	171.4	133.4
	S	3xM10	4xM10	4xM12	6xM12	6xM10	6xM12	4xM16	6xM12
	T		88				110		128
	U		113				133,4		154
Velocità massima - Max. speed		r.p.m.	7000			6000			5500
Forza assiale max. - Max. axial force		kN	35			45			50
Forza di serraggio max. - Max clamping force		kN	80			105			115
Massa (senza pinza) - Mass (without collet)		Kg	7.0	6.0	7.2	14.8	10.8	13.0	17.2
Cilindri consigliati - Recomm. cylinders		Tipo	VNK 102-46	VNK 102-46	VNK 102-46	VNK 150-67	VNK 150-67	VNK 150-67	VNK 200-86
Vel. max del cilindro - Max. cylinder speed		r.p.m.	7000	7000	7000	5500	5500	5500	4500

Attrezzo di ricambio - Changing unit		KSZ-DZ 42			KSZ-DZ 65				KSZ-DZ 80
Accessori - Accessories									
Manuale - Manual			00196842			00196844			01863597
Pneumatico - Pneumatic			01866500			01866599			

Attrezzo di ricambio manuale: vedi foto a pag. 57-58-59
Manual changing unit: see picture page 57-58-59